

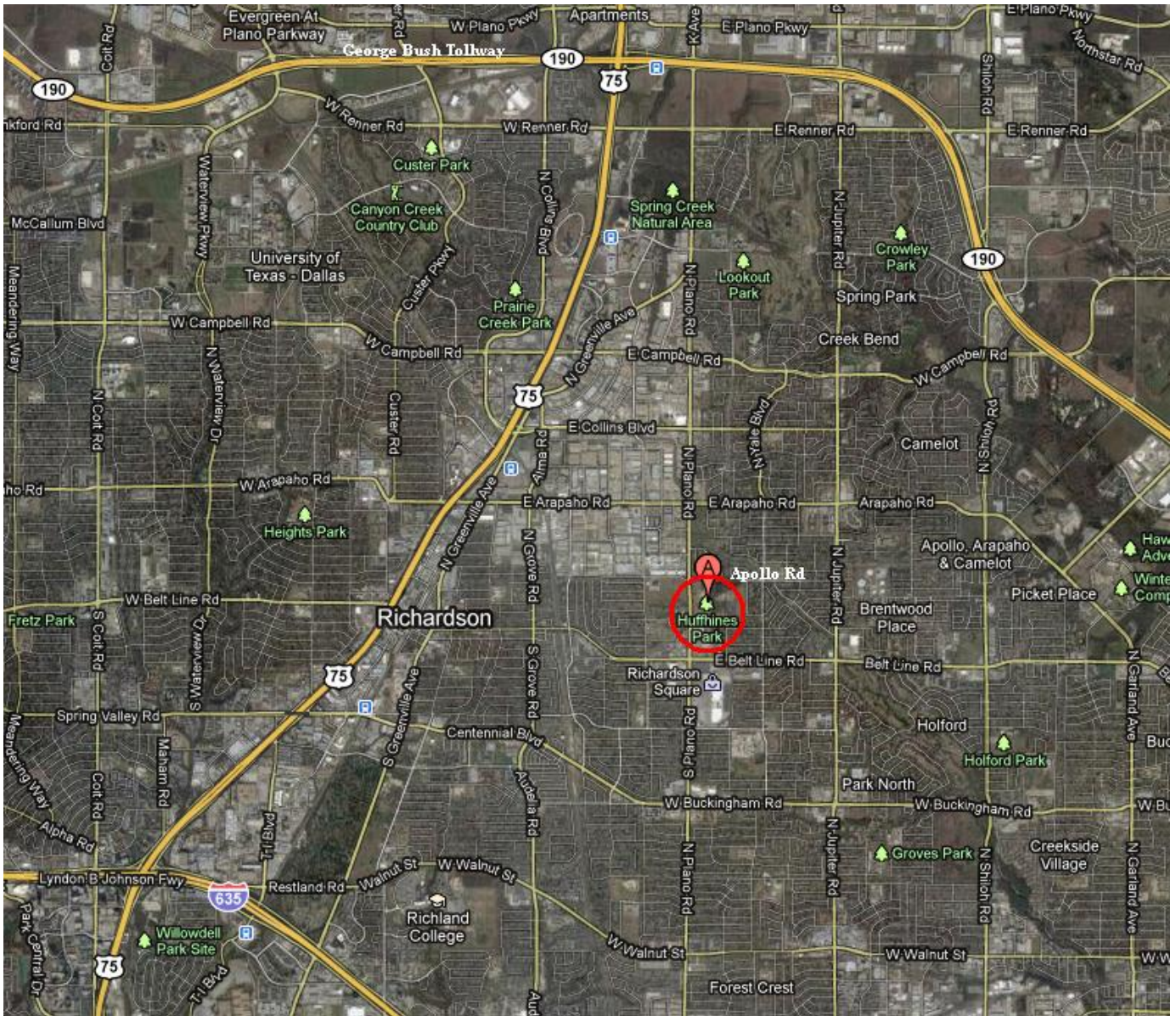


Dallas Section of the Society Petroleum Engineers Young Professionals Fourth Annual Softball Tournament



- What:** Annual Co-ed (2:1 male:female) Oil & Gas Softball Tournament aimed at promoting industry camaraderie through competition and benefitting construction of the Tom Hunt Energy Hall (http://www.natureandscience.org/expansion/the_vision.asp). All teams are guaranteed at least two games. Tournament capped at 16 teams.
- When:** April 9, 2011 at 8:00 am (first games will start at 8:30 am)
- Where:** Huffhines Park Softball Complex, 1500 Apollo Road, Richardson, Texas
- How:** Send your team name with contact person information (name, email and phone number) to elpdfw@spemail.org and pay the \$200 entry fee donation by **April 1, 2011**. Donate online at <http://www.spedallas.org/luncheon.htm> or send a check to:
Larry Champlin
DeGolyer & MacNaughton
5001 Spring Valley Rd, Suite, 800 East
Dallas, TX 75244
- Who:** The tournament is open to only Oil & Gas industry personnel and spouses. If you don't have enough players for a full team or you are an individual, we can try to help you put together a team. All sponsors, participants, friends and family get free lunch and drinks throughout the day, so even if you are not playing, come support your colleagues. The winning team will get their team name inscribed on the Tournament Champion's Cup and get to keep it until next year.
- Sponsorship!** **PLEASE CONTACT YOUR EMPLOYER/COMPANY ABOUT SPONSORING THIS EVENT. SPONSORSHIP IS AN ESSENTIAL PART OF MAKING THIS EVENT A SUCCESS!**
- \$500 – Gold Field Sponsor** – Donation will help pay for field rental and umpire fees. Sponsorship includes recognition on the tournament bracket banner, tournament program, SPE YP webpage, and during announcements at the tournament. Your company banner will be hung on one of the fields.
- \$200 – Silver Food/Drink Sponsor** – Donation will go towards paying for food and drinks for participants. Sponsorship includes recognition on the tournament bracket banner, tournament program, SPE YP webpage, and during announcements at the tournament. Sponsors may also put up a sign or banner at the event and hand out items.
- Additional Info:** All games will be officiated by two USSSA umpires and game balls will be provided. Teams are required to furnish their own bats and gloves. Uniforms (same colored shirts) and numbers are not required, but are encouraged. Tournament format will be double elimination with 55 minute games.
- Questions?** Check the SPE Young Professionals Webpage (<http://www.dallasspeyp.com/>) or contact Sara Miller (SMiller@keatax.com) or Brian Chacka (Brian.Chacka@Denbury.com).

Directions: From North Central Expressway (75), go east on Arapaho Road for 1.6 miles and turn right on North Plano Road. Go 0.5 miles and turn left on Apollo Road. The parking lot is the first turn on the right (0.2 miles).



SPE Dallas Softball Tournament Rules

Teams must play at least 9 players in the field, of which at least 3 must be women. There are no restrictions to where players can be positioned in the field. If a team does not have at least 9 players and at least 3 female players, they will forfeit.

No more than two men may bat consecutively. If a team runs out of female batters, they will cycle the female players through the lineup.

All batters start with 1-1 count. 1 courtesy foul is allowed.

Extra innings are played 1 pitch.

12" softballs will be supplied and will be used for all batters and all games.

If a man walks before a female, he will be awarded second base. If it occurs with two outs, the female may take first base.

Teams are required to hustle on and off the field between innings. No warm-ups allowed after the first inning.

Only USSSA, ASA and old bats allowed.

No new inning will start after 55 minutes.

Mercy run rule: 20 runs after 3 innings, 15 after 4, and 10 after 5. Flip-flop rule will be used. Three home runs allowed per team per game. After three it will be an out.

Pitching arc is 6'-10'.

No base stealing.

Batting team is required to fetch all balls that go out of play and return them to the field. All rules not mentioned above follow USSA's slow pitch softball rules (<http://www.usssa.com/usssa/usssa-general/2011SPRuleBook.pdf>) and will be interpreted by the umpire and if necessary Tournament Committee Members Brian Chacka and Sara Miller. You may protest an interpretation, but NOT a judgment call.

For any emergencies, call Brian Chacka (972.835.1920) or Sara Miller (817.504.0976).